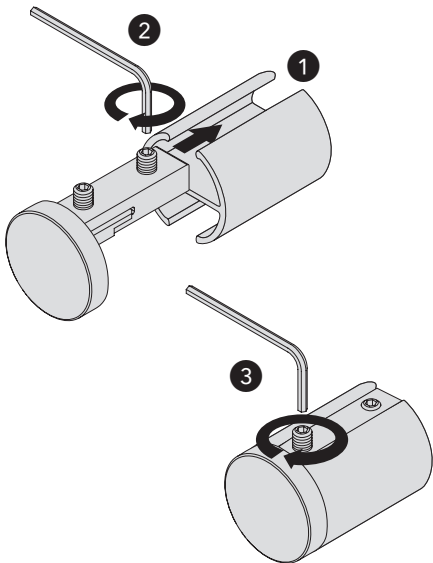
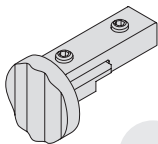


ENDSTÜCKE

Montageanleitung | *Notice de montage: embout* | *Installation instructions: endpiece* | *Montagehandleiding: eindstuk* | *Istruzioni d'installazione: terminale*

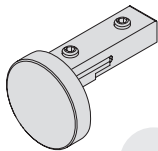
ENDSTÜCK





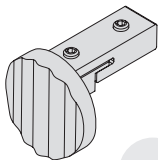
20

02-2893



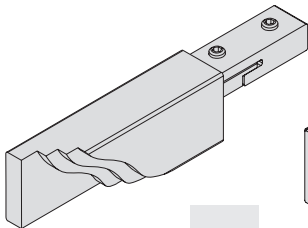
24

02-2815



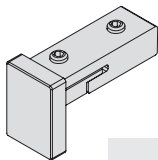
28

02-2894



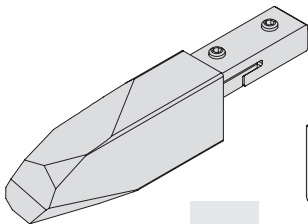
02-2865 02-2866

14/20



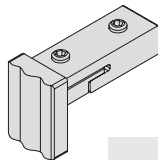
02-2817

14/20



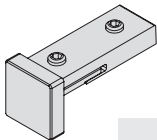
02-2852

14/20



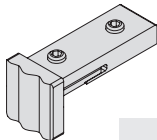
02-2861

14/20



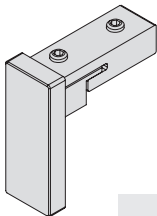
02-2816

14/15



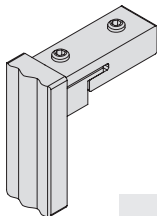
02-2860

14/15



02-2818

14/36



02-2862

14/36

Achtung: Bei Verwendung von Hilfsmitteln (Bohrmaschinen usw.) zur Installation und Pflege unseres Produkts unbedingt Sicherheitshinweise der Hersteller beachten.

Attention: En cas d'utilisation d'échelles, foreuses etc. pour l'installation ou l'entretien de nos produits, veuillez respecter les notices des fabricants.

Attention: Please observe the safety instructions of the manufacturer when using tools (drills, etc.) for installation and maintenance of our product.

Opgelet: in het geval van gebruik van hulpmiddelen (boormachines enz.) voor installatie of onderhoud, gelieve rekening te houden met de veiligheidsvoorschriften van de fabrikant.

Attenzione: In caso di utilizzo di ulteriori strumenti (trapani etc.) per l'installazione del prodotto, vogliate assolutamente rispettare le avvertenze di sicurezza del fabbricante.

MHZ Hachtel GmbH & Co. KG · Sindelfinger Straße 21 · 70771 Leinfelden-Echterdingen · Telefon 0711/97 51-0 · Telefax 0711/97 51-41 150

*MHZ Hachtel S.à.r.l. · 27, Rue de Steinfort · L-8366 Hagen
Téléphone NL +32 2 888 16 49 · Téléphone Fr. +32 2 888 16 59
Telefax +32 78 48 32 60*

*MHZ Hachtel & Co. Ges.m.b.H. · Laxenburger Straße 244
A-1230 Wien · Telefon 0810-95 10 05 · Telefax 0800 12 12 40*

*MHZ Hachtel & Co AG · Eichstrasse 10 · CH-8107 Buchs/Zürich
Telefon 0848 47 13 13 · Telefax 0800 55 40 04*

*ATES - Groupe MHZ · 1 B, rue Pégase · CS 70071 · F 67841 Entzheim
Téléphone 03.88.10.16.20 · Télécopie 03.88.10.16.46*